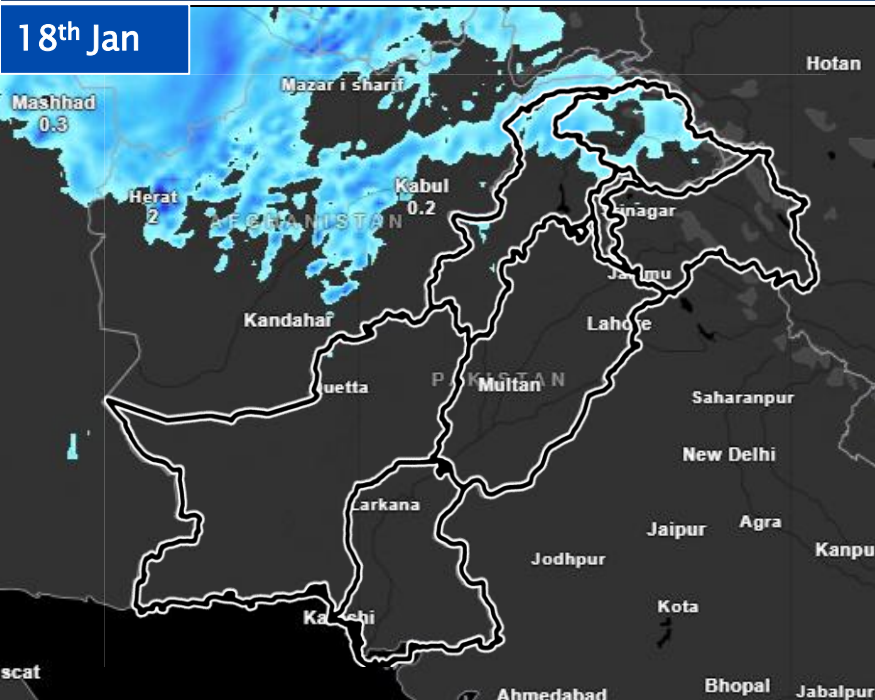




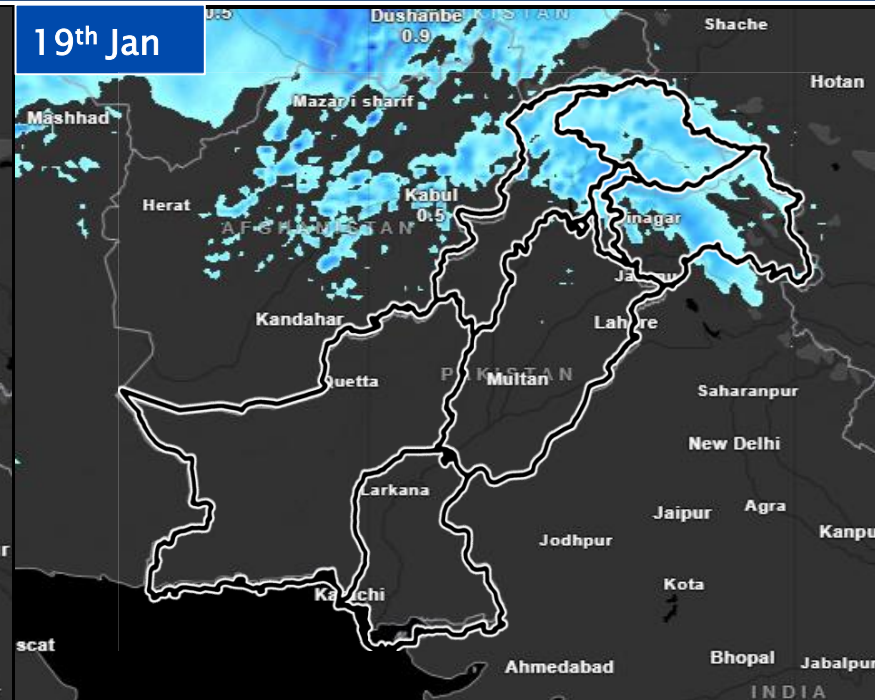
Weather Advisory (18th to 21st Jan, 2026)

National Emergency Operation Centre – National Disaster Management Authority

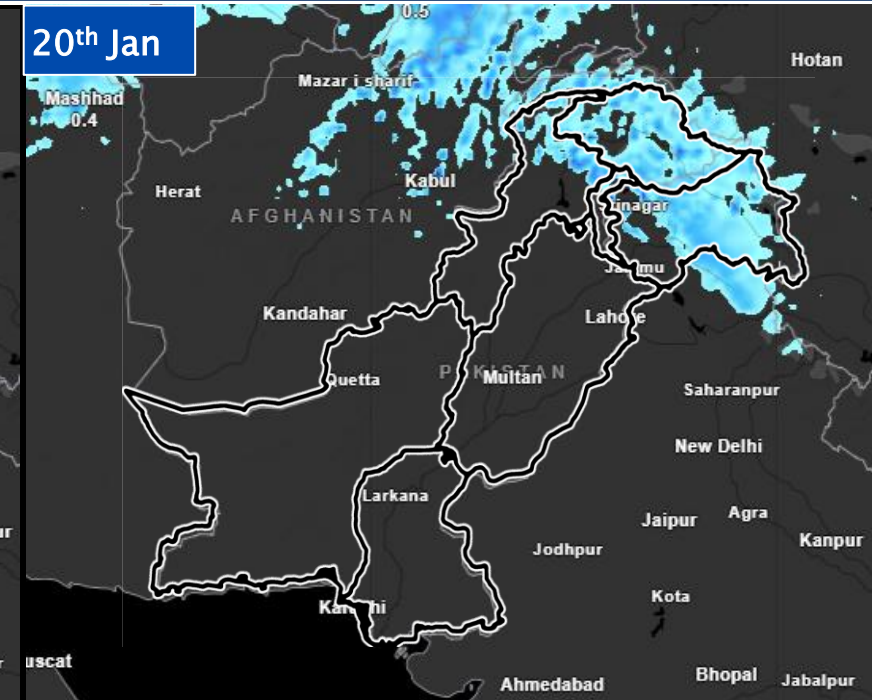
18th Jan



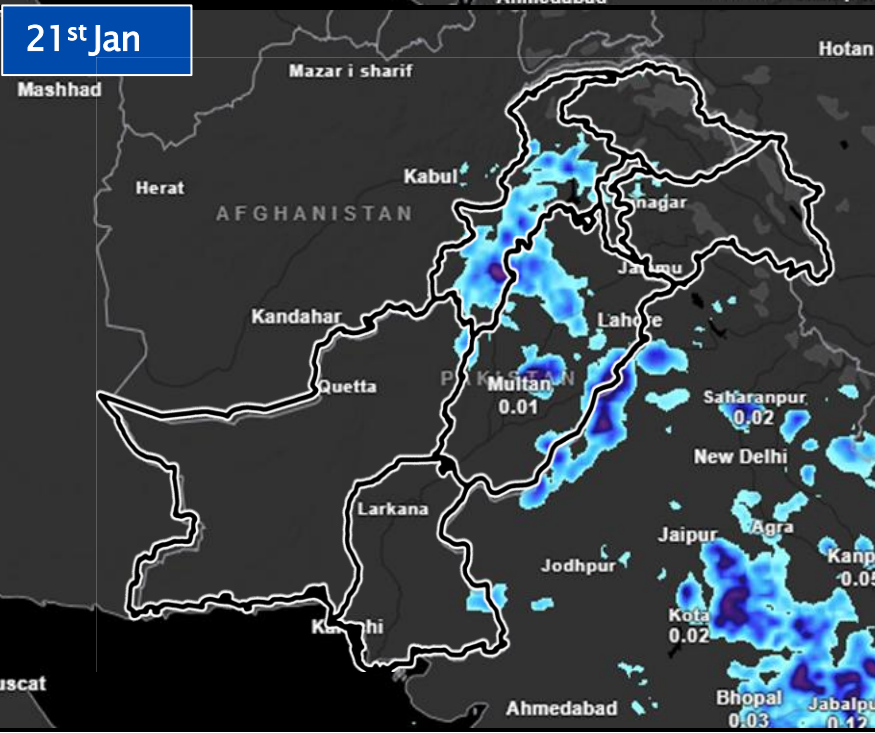
19th Jan



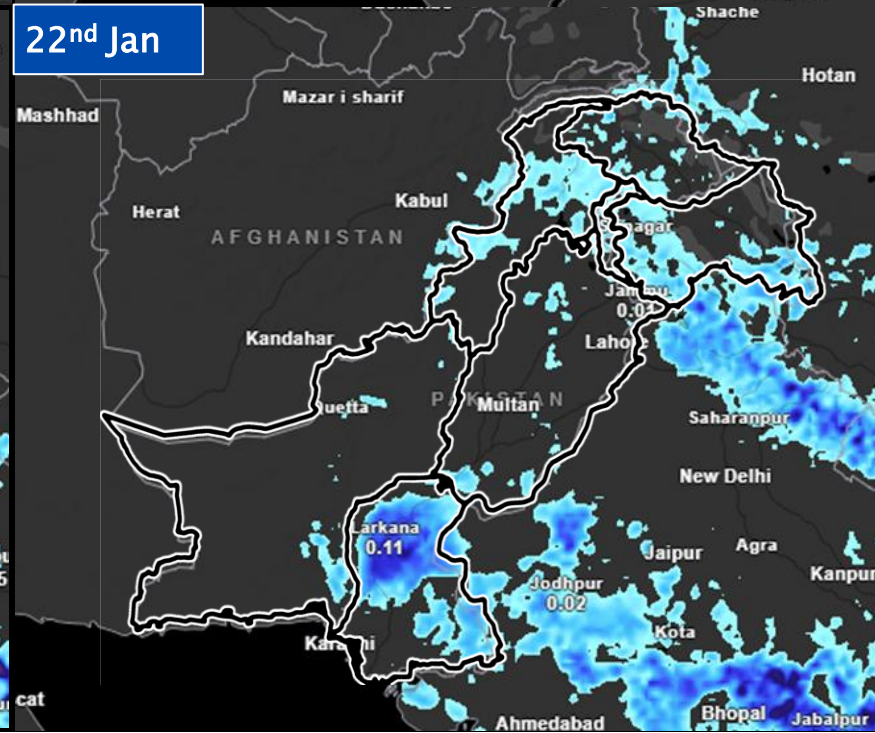
20th Jan



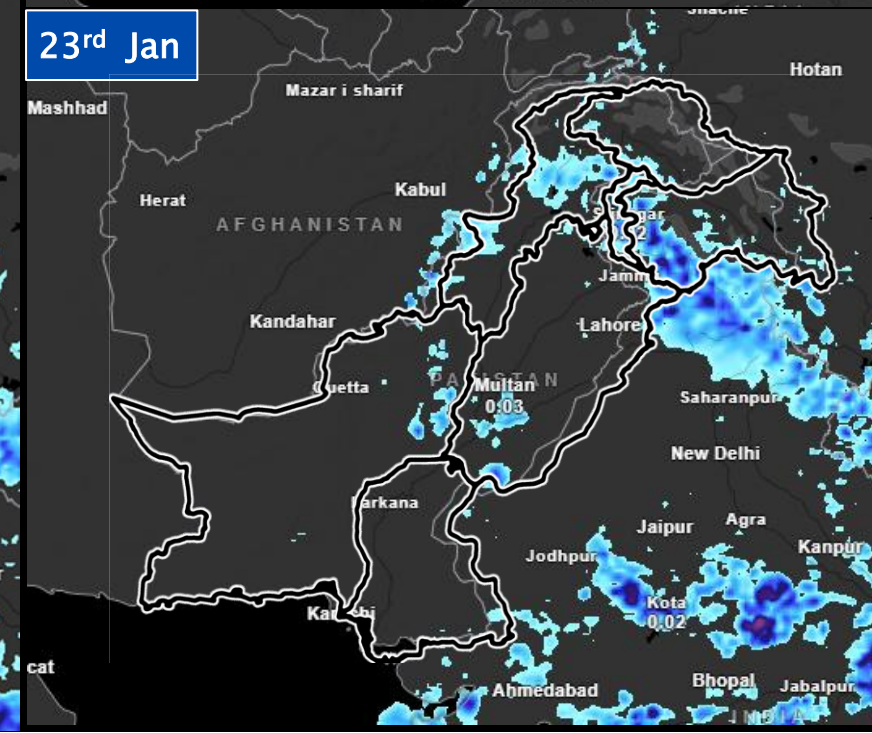
21st Jan



22nd Jan



23rd Jan



Punjab:

Widespread rainfall is expected in Pothohar and northeastern parts of the province including Islamabad, Rawalpindi, Attock, Jhelum, Mianwali, Chakwal, Sargodha, Khushab, Mandi Bahauddin, Gujrat, Gujranwala, Faisalabad, Sahiwal, Sialkot, Lahore, Narowal, Hafizabad, Multan, Bahawalpur, Dera Ghazi Khan and surrounding areas from 20th to 23rd of Jan, 2026. However, Murree and Gilyat will experience heavy snowfall during this time period.

Balochistan:

Isolated rainfall and thunderstorms are expected in Quetta, Zhob, Ziarat, Kalat, Chaman, Pishin, Qillah Abdulla, Qillah Saifullah, Nushuki, Kharan, Barkhan, Sibi, Loralai, Musakhel, Turbat, Gawadar, Lasbella, Kech, Awaran, Chaghi, Panjgur, Khuzdar, and surrounding areas from 21st to 22nd Jan, 2026.

Sindh:

Isolated rainfall is expected in different parts of the province including Karachi, Hyderabad, Dadu, Jacobabad, Kashmore, Larkana, Shaheed Benazirbad, Mirpurkhas, Sukkar, and surrounding areas from 22nd to 23rd of Jan, 2026.

KP:

Widespread rainfall is expected in most parts of the province including Chitral, Dir, Shangla, Swat, Kalam, Malakand, Kurram, Mansehra, Mohmand, Buner, Haripur, Abbottabad, Peshawar, Kohat, Banu, and surrounding areas from 13th to 18th to 23rd of Jan, 2026. Heavy Snowfall is also expected over the hilly areas during this time period.

GB & AJK:

Light to moderate rainfall is expected in most parts of GB and AJ&K including Astore, Diamir, Skardu, Hunza, Shigar, Bagh, Muzaffarabad, Poonch, Haveli, Neelum Valley, Bagh, Rawalakot, and surrounding areas from 18th to 23rd of Jan, 2026 with occasional gaps. Heavy Snowfall is also expected over the hilly areas during this time period.