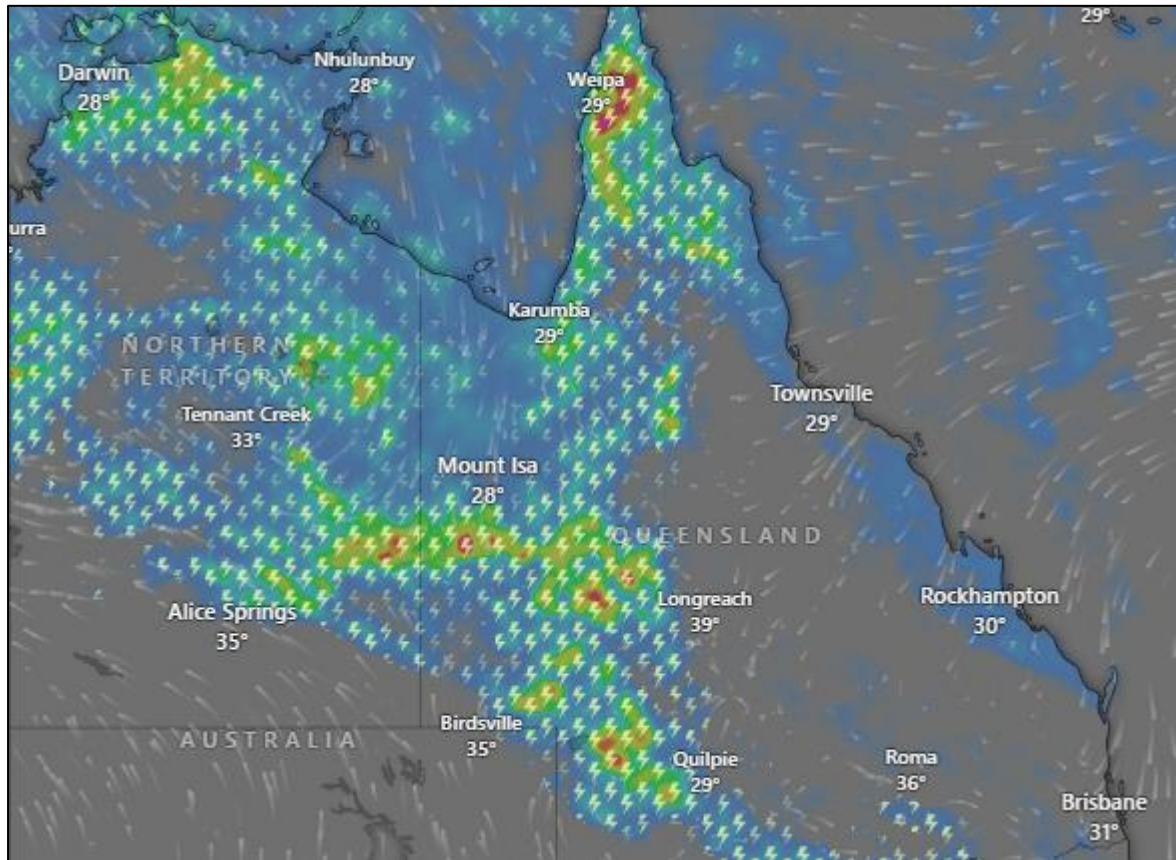




Flooding - Queensland & Northern Australia



Valid: From December 19th, 2025 to December 24th, 2025

Affected Areas

Most affected areas include: Northern Australia Top End (Darwin–Arnhem Land), Gulf Country, northern NT, and north-west to central Queensland. Severely affected areas include: Interior and north-central Queensland, parts of the NT–QLD border, and Gulf of Carpentaria catchments with persistent convective rainfall.

Hazard Types

Flash flooding & riverine flooding, Localized urban flooding, Severe thunderstorms & lightning, Short-duration intense rainfall, Transport and infrastructure disruption.

Hazard Summary

An active monsoonal-convective pattern is producing widespread thunderstorms and heavy rainfall across northern and interior Australia, particularly over northern NT and western to central Queensland. Repeated storm cells increase the risk of flash flooding and rapid river rises, while severe thunderstorms may disrupt transport and critical services during the week.