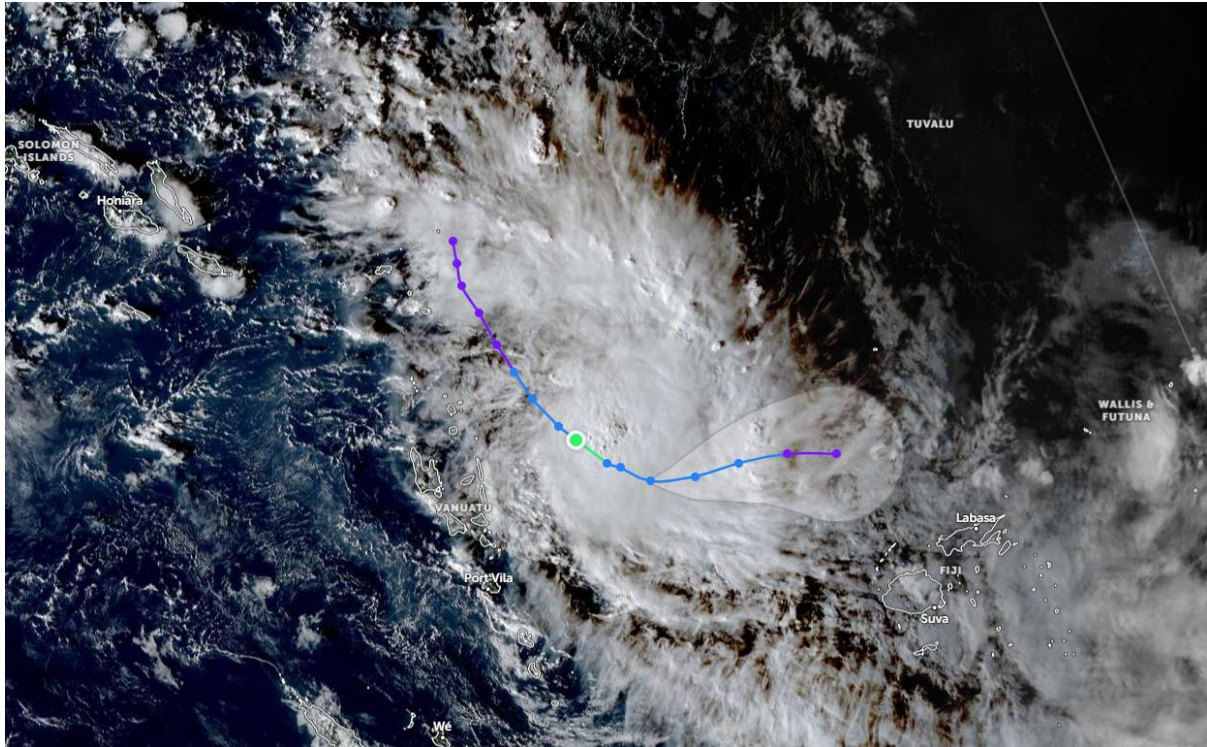




Tropical Cyclone - Eight



Potentially Affected Areas

Vanuatu, Wallis and Futuna, Fiji, Tuvalu, Solomon Islands

Hazard Types

Cyclone

Hazard Summary

Tropical Cyclone - Eight is located in the Southern Pacific Ocean with maximum sustained winds of 65 km/h (40 mph), and wind gusts up to 83 km/h (52 mph). According to this forecast, the cyclone is headed east-southeast at about 13 km/h (8 mph), and is expected to remain at this strength over the next 24 hours. The storm appears intense, with widespread cloud bands extending outward, suggesting strong winds and heavy rainfall.