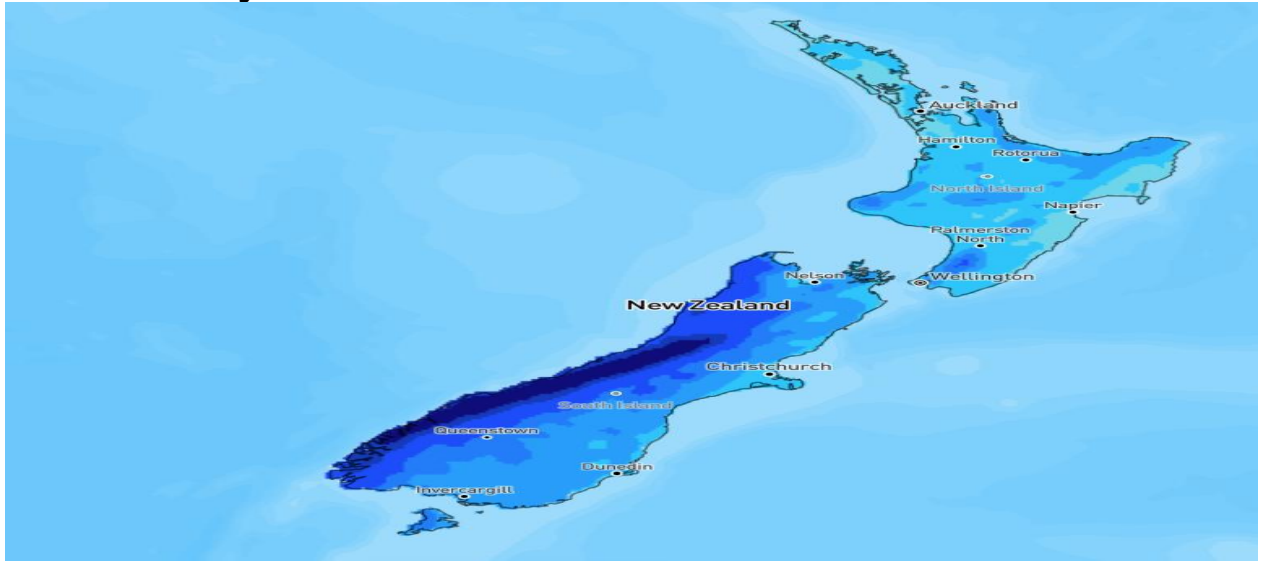




## Heavy Rains/ Thunderstorms and Wind - New Zealand



Valid: From 09 January 2026 to 11 January 2026

### Affected Areas

Ranges of the Westland District, about and north of Haast.

### Hazard Types

Rapid rises in streams and rivers, Surface flooding in low-lying areas, Slips and landslides in hilly terrain.

### Hazard Summary

Heavy rain is forecast for the ranges of the Westland District, about and north of Haast, with 200–300 mm expected during the warning period. Thunderstorms are possible, with peak rainfall rates of 25–35 mm/hr expected Sunday morning and early afternoon. The chance of upgrading to a Red Warning is minimal.