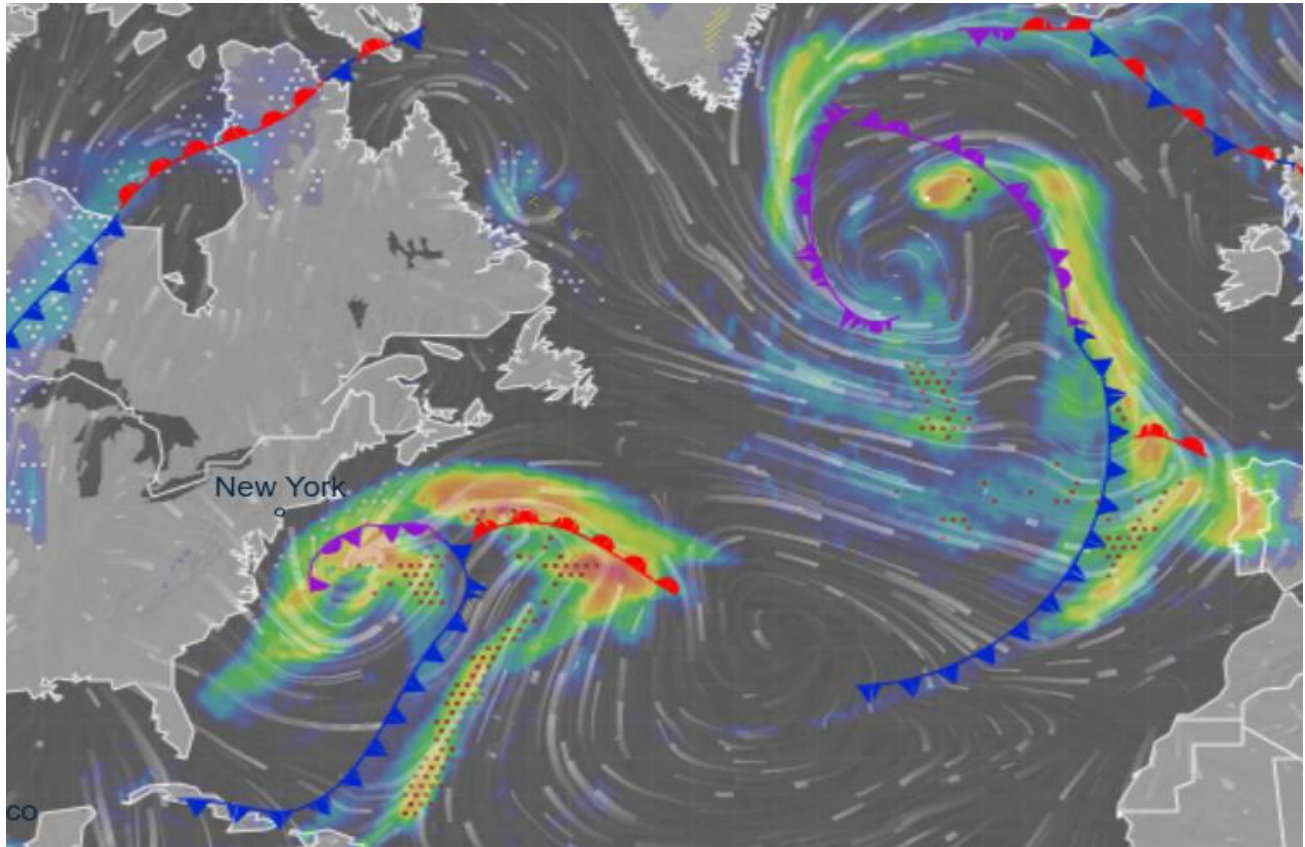


## Bomb Cyclone Impacting Eastern US Coast



Valid: January 31 – February 2, 2026 (Peak: Saturday–Sunday)

### Affected Areas

Southeast United States (North Carolina, South Carolina, Virginia), Mid-Atlantic United States (Maryland, Delaware, New Jersey, Pennsylvania), Northeast United States (New York and Long Island, New England), southern fringe areas.

### Hazard Types

Heavy snow (6–15 inches, locally 40+ inches in coastal), hurricane-force gusts (70–100 mph), blizzard and whiteout conditions, coastal flooding and storm surge (2–5 feet), thunderstorms and precipitation, major travel and power disruptions.

### Hazard Summary

Rapidly intensifying low (~970–990 hPa) forms off Carolinas Jan 30, explodes in strength offshore Jan 31–Feb 1 from warm Atlantic moisture clashing with Arctic cold air, then tracks northeast along the coast Feb 1–2. Delivers heavy snow and blizzards Southeast to Mid-Atlantic (15–40+ inches Outer Banks to Virginia coast), coastal gales/surge, whiteouts, early thunderstorms. Peaks: Jan 31 heaviest snow (1–2"/hr rates), Feb 1 gales/flooding, Feb 2 lingering Northeast snow/winds near New York.