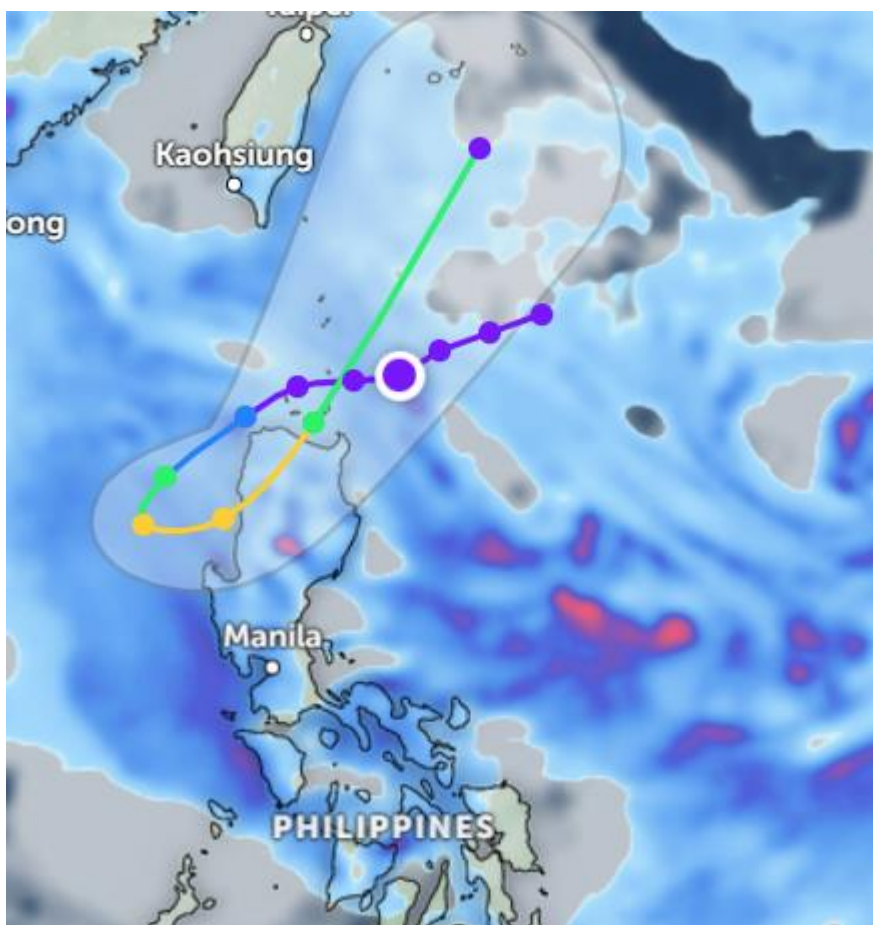




Tropical Depression (Emong)– Philippines



Affected Areas

Northern and Central Luzon, Babuyan Islands and Batanes, Eastern waters of South China Sea, Southwestern Ryukyu Islands (including Okinawa), Marine zones north and west of Luzon

Duration

July 23-26, 2025

Hazard Types

Heavy Rainfall: Risk of localized flash flooding and landslides

Hazard Summary

TC 11W will intensify over water in 36 hours before turning north-northeastward over Luzon, weakening rapidly. Dissipation is expected in 3 days; forecast confidence is medium beyond 36 hours due to diverging model tracks.