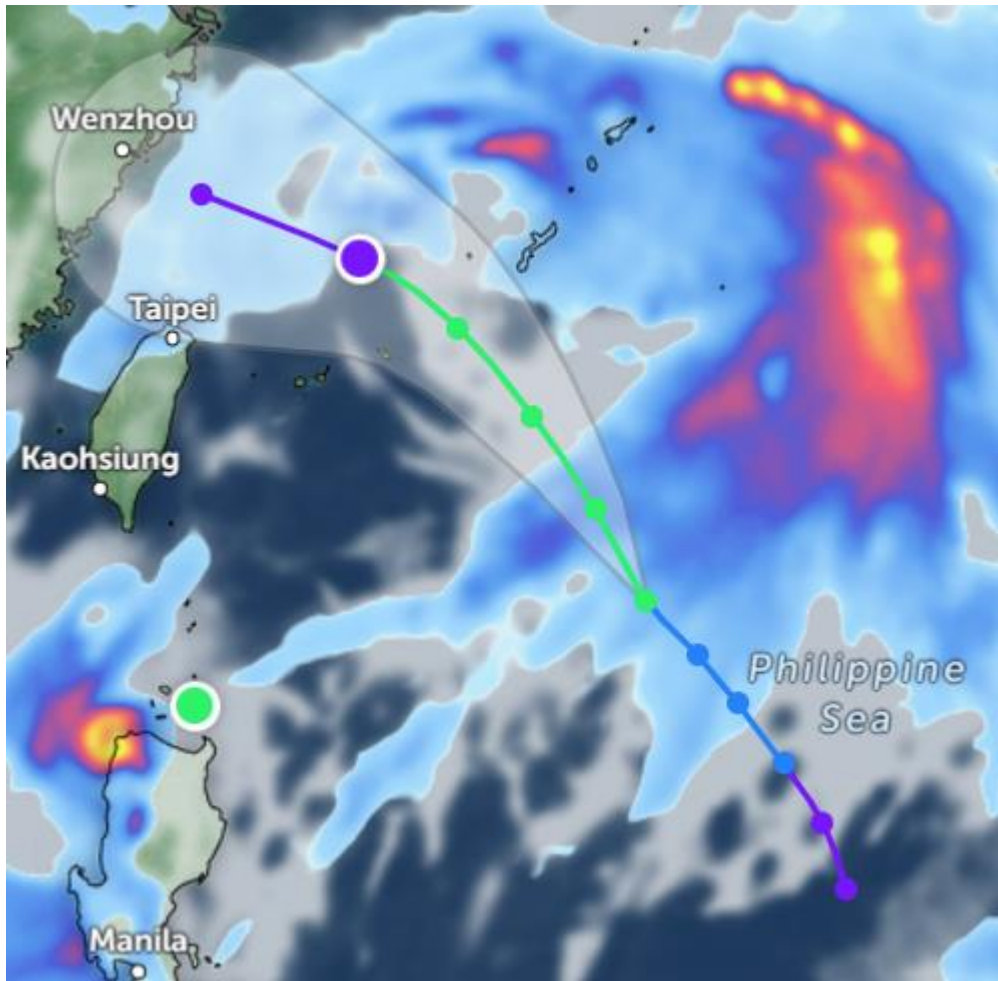




Tropical Cyclone – Francisco (Dante) – Japan



Affected Areas

Okinawa Prefecture (including Kadena Air Base), Ryukyu Islands, Southern Japan coastal waters, Northern Philippine Sea, Eastern China coast (south of 30°N)

Duration

July 23-26, 2025

Hazard Types

Strong winds, heavy seas, and potential localized flooding due to gale-force winds and monsoon interaction.

Hazard Summary

Francisco (Dante) is expected to slowly intensify to 75 km/h in 12 hours, with gale-force winds extending up to 324 km northeast of the center. As it nears Okinawa, it may merge into a monsoon depression, bringing strong winds and rough seas to the region.