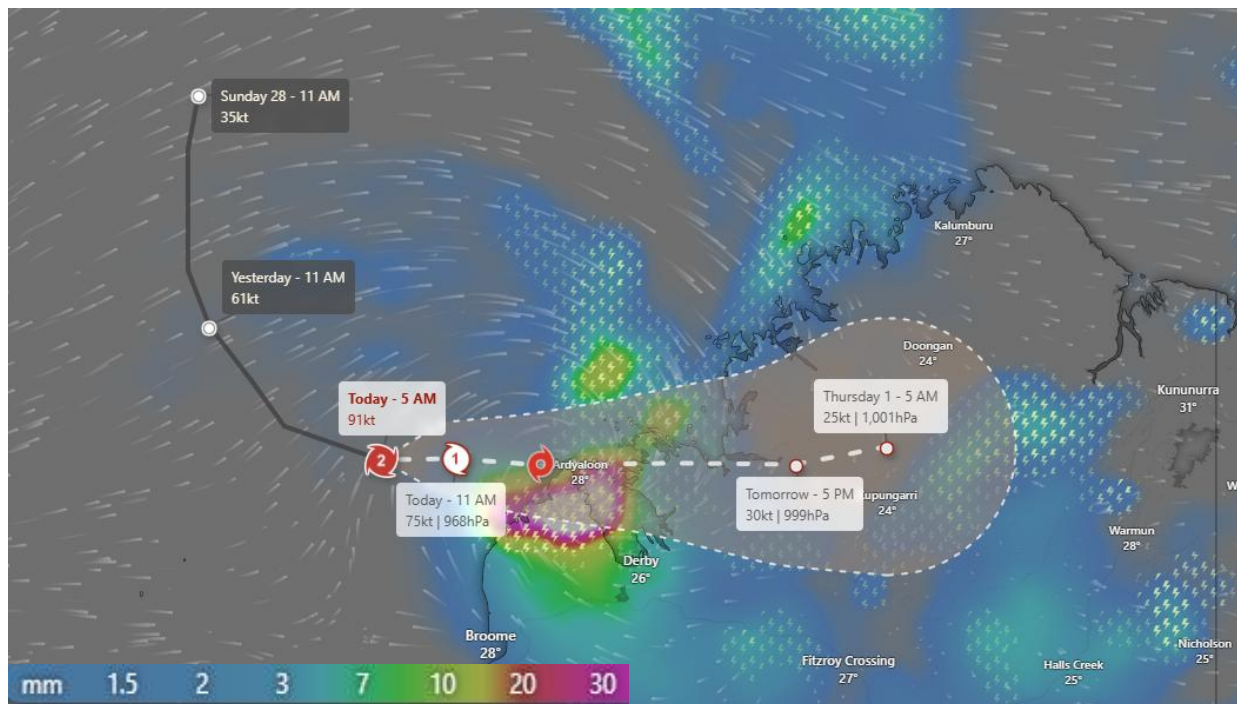




Dec 30, 2025

Global Alerts – East zone

Tropical Cyclone-Australia (Hayley)



Affected Areas

Koolan Island Village, Ardyaloon, Bidan, Derby, Jarlmadangah Burru, Koorabye, Lansdowne, Marion, Halls Creek, Nicholson, Mamadi.

Duration

December 30, 2025 – January 1, 2026

Hazard Types

Heavy Rainfall/ Thunderstorms

Hazard Summary

Tropical Cyclone Hayley is bringing heavy rainfall to northwestern Australia, particularly across the Kimberley region, as deep tropical moisture spreads inland. Intense rain bands and embedded thunderstorms are increasing the risk of flash flooding, especially in low-lying and poorly drained areas. Thunderstorms associated with the cyclone and the broader monsoon flow may produce short-duration heavy downpours, lightning, and gusty winds. These conditions are likely to cause disruptive weather and localized flooding across coastal and inland parts of the northwest.