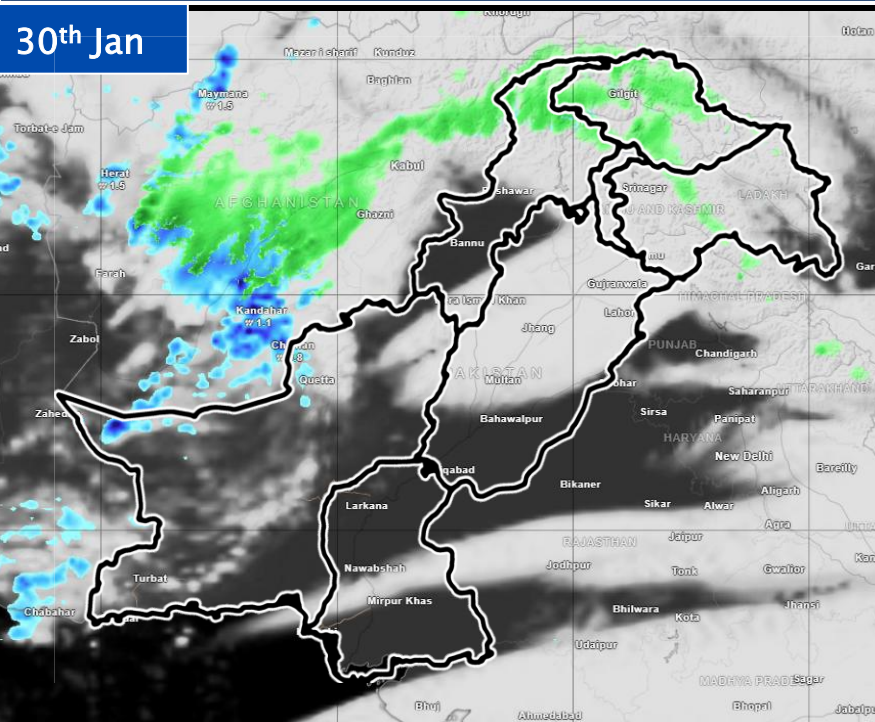




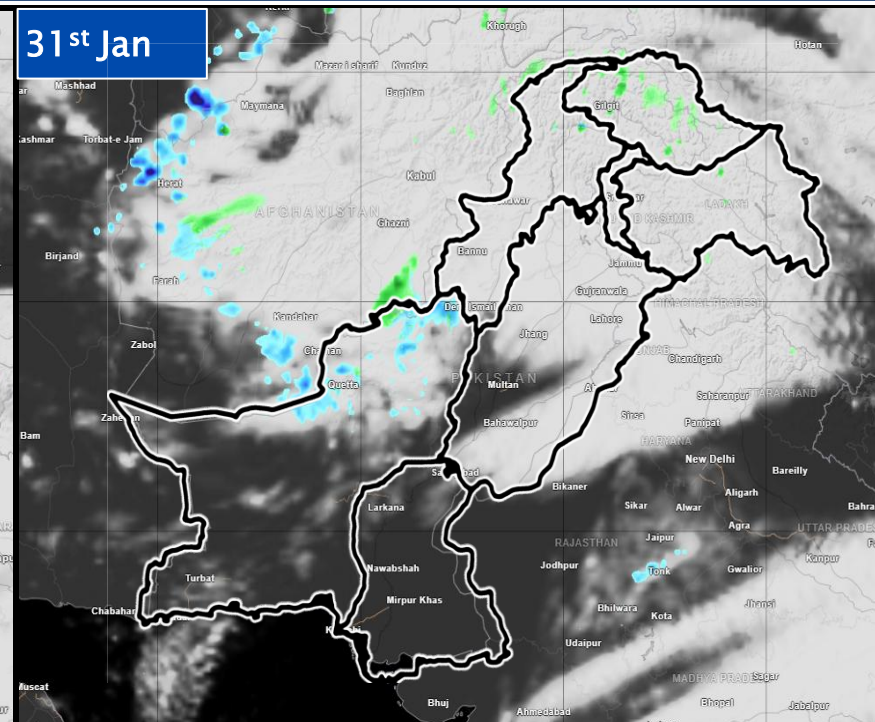
# Weather Advisory (30<sup>th</sup> Jan to 4<sup>th</sup> Feb, 2026)

National Emergency Operation Centre – National Disaster Management Authority

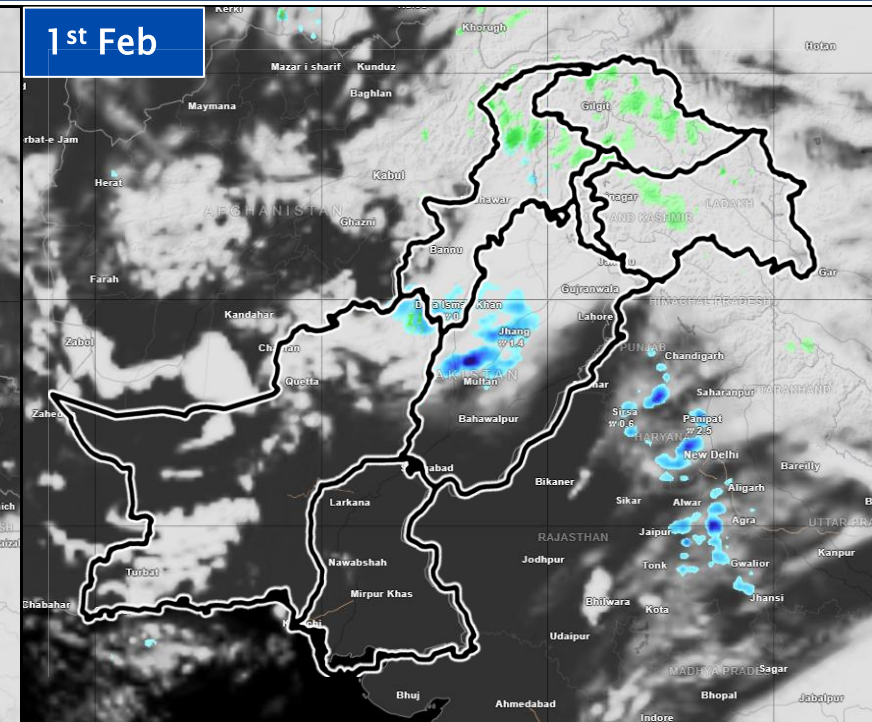
30<sup>th</sup> Jan



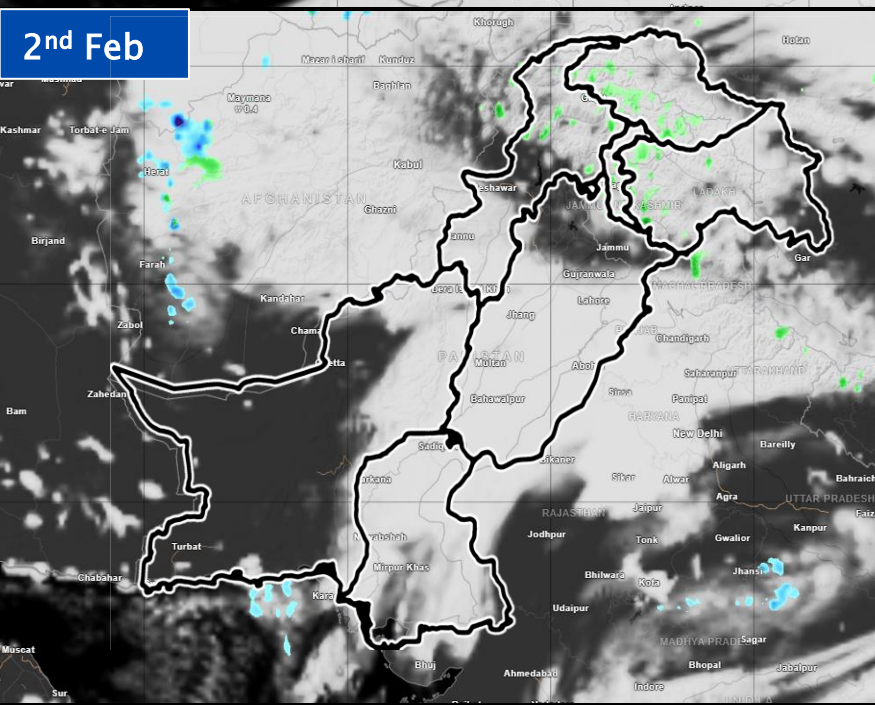
31<sup>st</sup> Jan



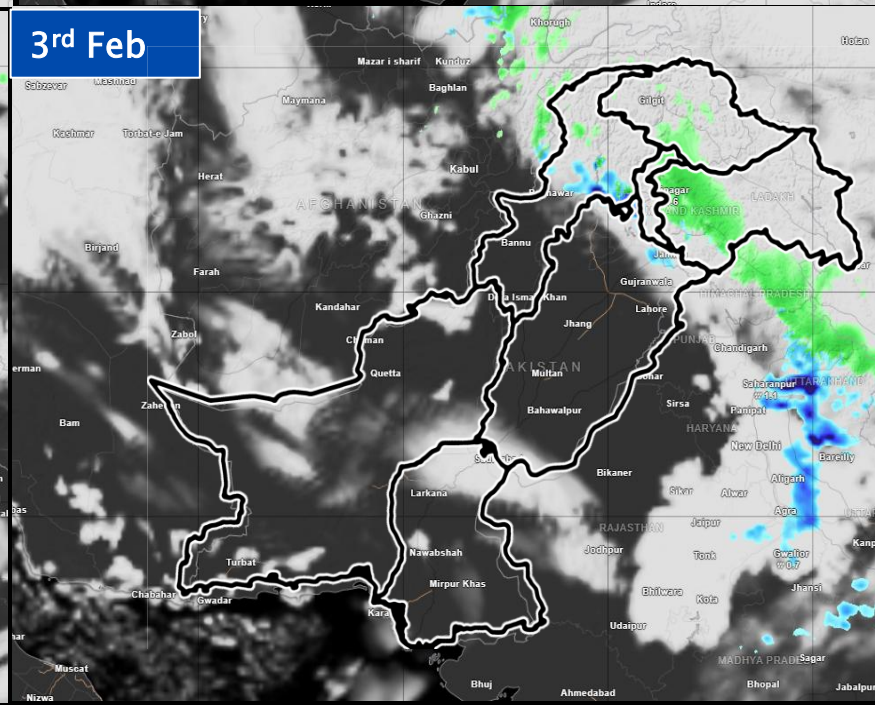
1<sup>st</sup> Feb



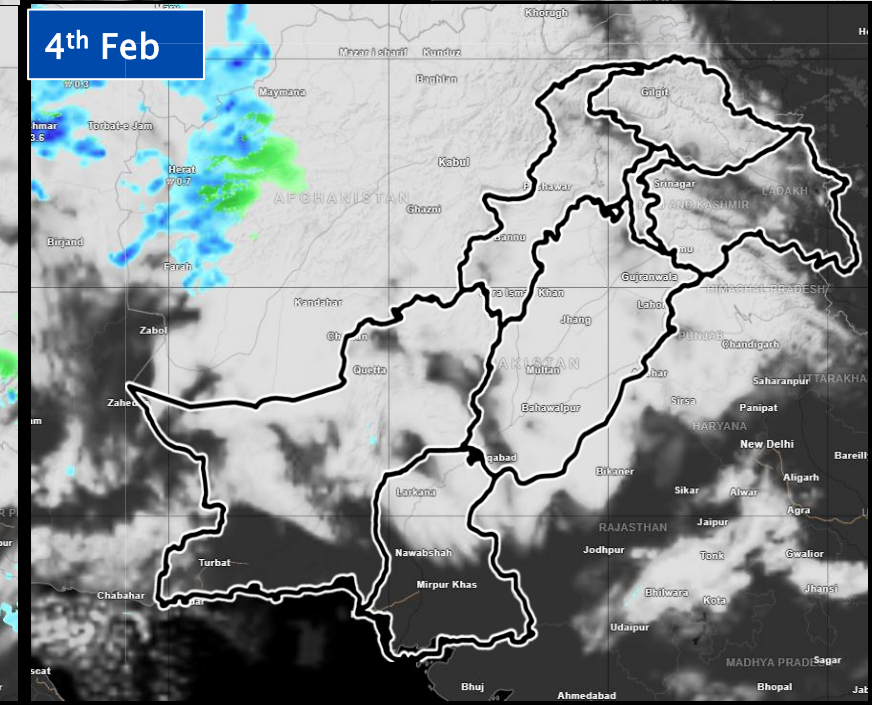
2<sup>nd</sup> Feb



3<sup>rd</sup> Feb



4<sup>th</sup> Feb



Punjab:

Cold and dry weather with night/morning fog to prevail. Northeastern and hilly areas (Murree, Galiyat, Pothohar) may see cloudy conditions with isolated rain/light snow during 31 Jan–3 Feb.

Balochistan:

Largely cold and dry; however, northern and central highlands may experience cloudy weather with isolated rain/snow during 30 Jan–1 Feb due to a passing westerly disturbance.

Sindh:

Cold and dry weather with minimal cloudiness; night and early morning fog likely, especially in upper Sindh.

KP:

Cold and dry conditions in plains; upper and northern districts likely to experience cloudy spells with isolated rain/snow during 30 Jan–3 Feb under westerly influence.

GB & AJK:

Under a westerly trough, very cold and cloudy weather with intermittent snowfall over higher elevations is expected during 30 Jan–3 Feb; precipitation weakens by 4 Feb while cold persists, with isolated rain in lower and snow in upper AJ&K.