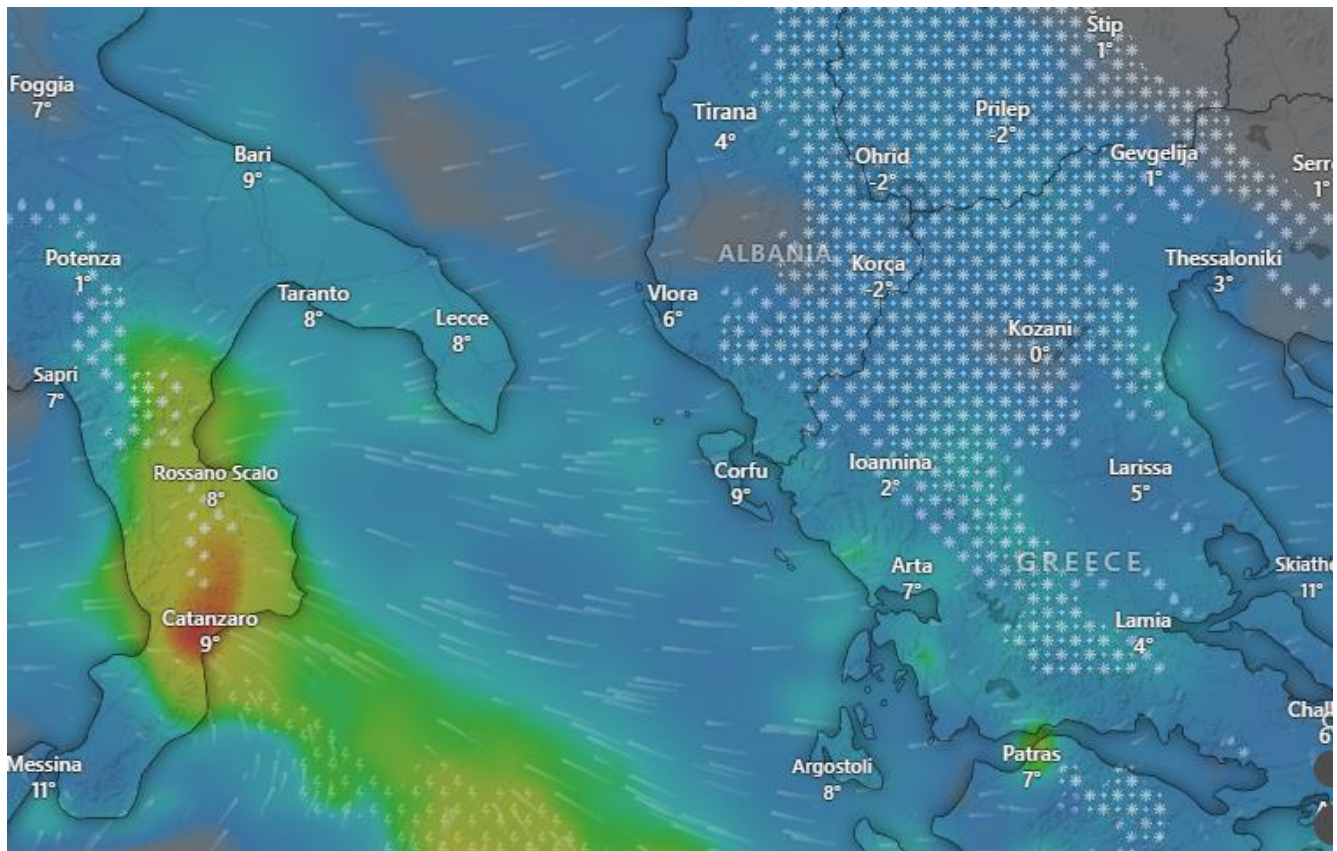




Snowfall - Albania



Affected Areas

Albania, Northern and northeastern mountainous regions (including the Albanian Alps), Central mountainous areas, higher elevations across the country and Mountain passes and inland valleys.

Hazard Types

Heavy snowfall, Blizzard conditions in higher areas, Strong to gusty winds, Very low visibility, Formation of deep snowdrifts, Icy and extremely slippery road surfaces and Risk of avalanches in mountainous zones.

Hazard Duration

18-01-2026 to 23-01-2026

Hazard Summary

A strong cold front is bringing heavy snowfall to large parts of Albania, especially in the mountainous and higher elevation regions. Significant accumulations of snow are expected, with blizzard conditions possible in exposed higher areas. This will cause very poor visibility, dangerous driving conditions on mountain roads and passes, and a high risk of snowdrifts. Icy surfaces and sudden strong gusts of wind are also likely. Travel in mountainous areas is strongly discouraged unless absolutely necessary. Avalanche risk will be elevated in the Albanian Alps and other steep mountainous terrain.