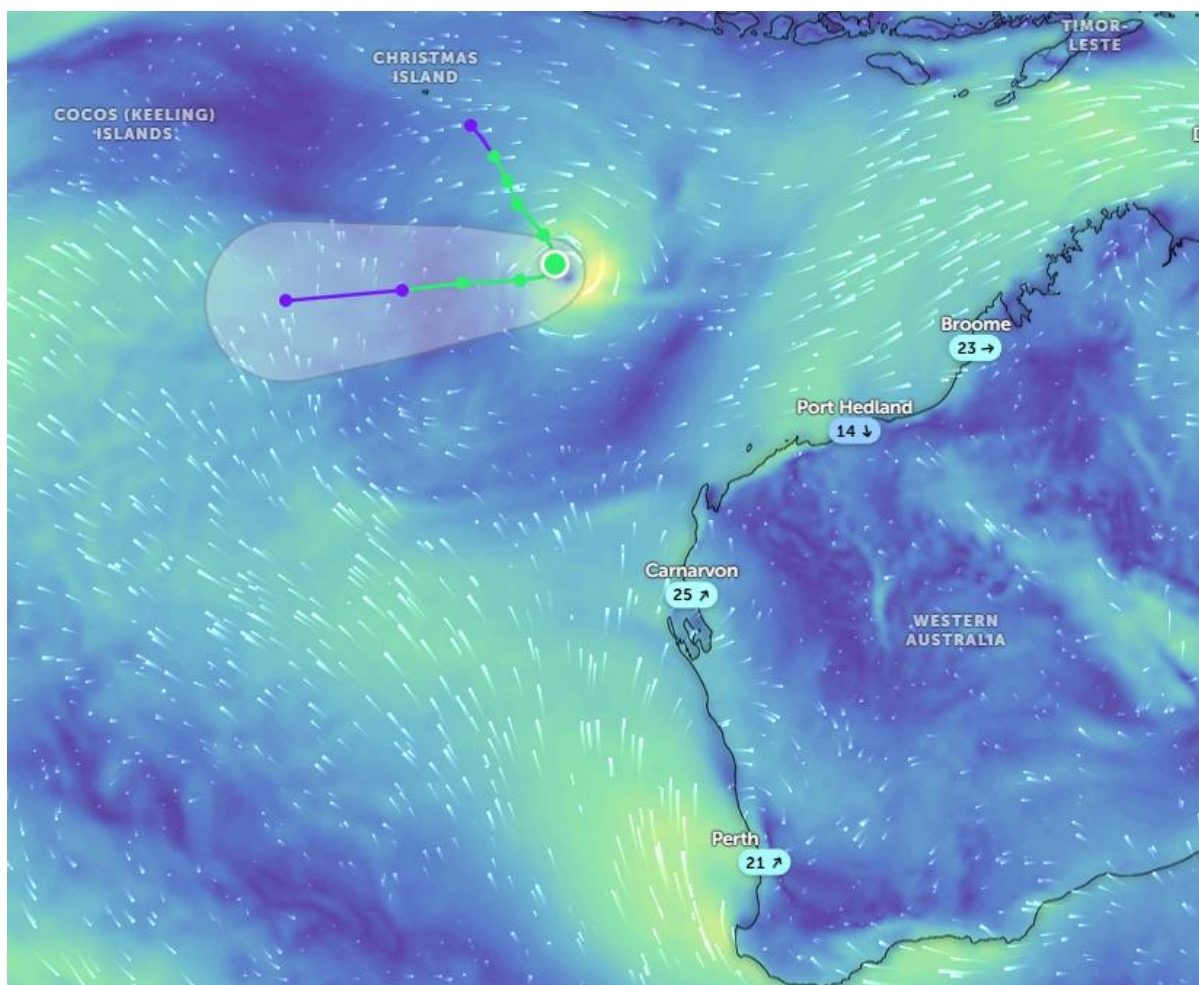




Tropical Cyclone Iggy - Eastern Indian Ocean



Affected Areas

Christmas Island and Cocos (Keeling) Islands, North-West Western Australia

Hazard Types

Tropical Cyclone

Hazard Summary

A tropical low/cyclone system is developing over the eastern Indian Ocean, west of Christmas Island, with a projected track moving generally southeast toward the north-west coast of Western Australia. The tight circular wind pattern and forecast cone indicate strengthening winds, heavy rainfall, and rough seas. As the system approaches land, it may intensify further, increasing the risk of coastal hazards, marine disruption, and inland rainfall impacts.