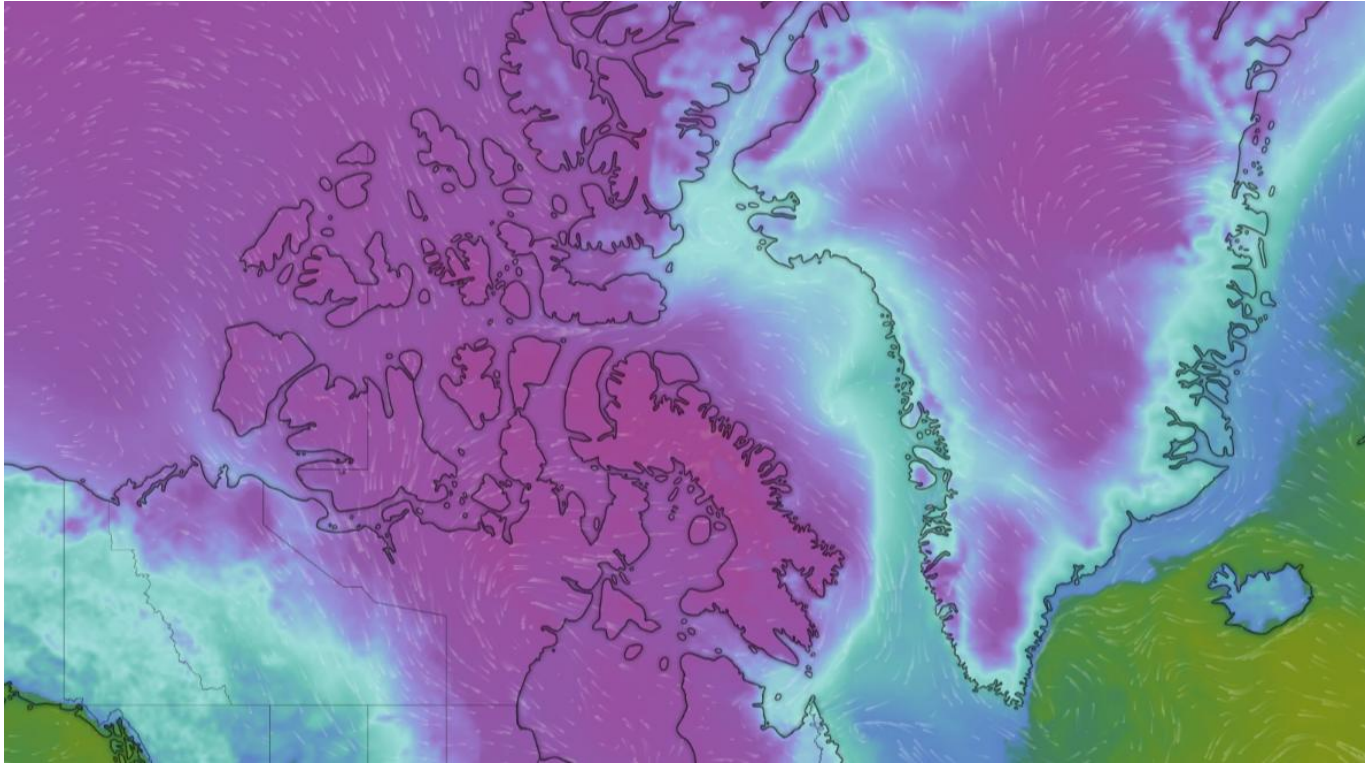




Severe Arctic Cold Wave across Canada & Greenland



Valid: From 20 January 2026 to 25 January 2026

Affected Areas

Northern and central Canada, including Arctic Archipelago, Nunavut, northern Quebec, Labrador, and interior eastern Canada, along with Greenland, particularly western and central regions, including coastal and inland areas.

Hazard Types

Extreme Cold Temperatures, Severe Wind Chill, Blizzard / Snowfall.

Hazard Summary

An intense Arctic cold wave is dominating Canada and Greenland due to the southward expansion of extremely cold polar air. Temperatures are falling to dangerously low levels, with severe wind chill conditions significantly increasing the risk of frostbite and hypothermia within minutes of exposure. The prolonged cold is also contributing to snowfall, blowing snow, and hazardous travel conditions, while placing stress on energy, transport, and essential services. These extreme conditions are expected to persist over the coming days before gradual easing.