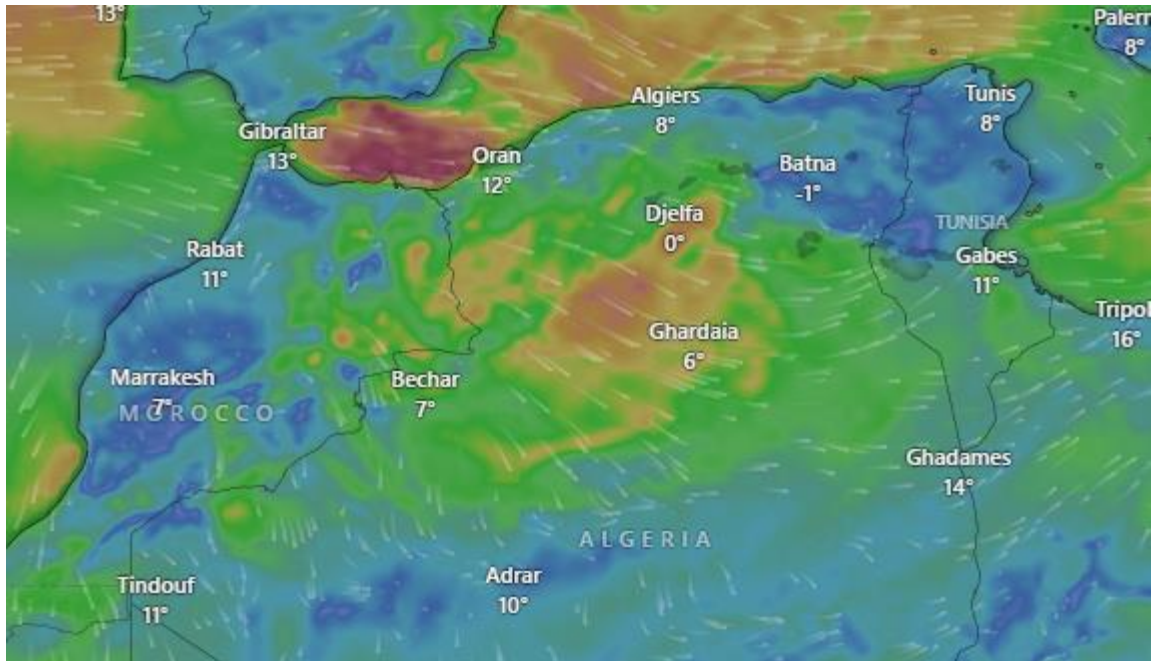




Government of Pakistan
National Disaster Management Authority
Prime Minister's Office Islamabad

Sahara Dust Storm



Valid: 20 January, 2026 to 28 January, 2026

Affected Areas

Ghardaia, El Bayadh, Ghadames, Djelfa, Biskra, Nalut, altdamn, El Menia

Hazard Types

Sand Storm

Hazard Summary

Dust storms are intensifying across the Sahara and parts of northern Africa, driven by strong winds lifting vast amounts of sand and dust into the atmosphere. Visibility may be significantly reduced, affecting travel and daily activities, while air quality is expected to deteriorate. These conditions can cause respiratory discomfort and may disrupt transportation, with dust clouds potentially spreading over neighboring regions. Residents and travelers are advised to take precautions and follow local weather advisories.